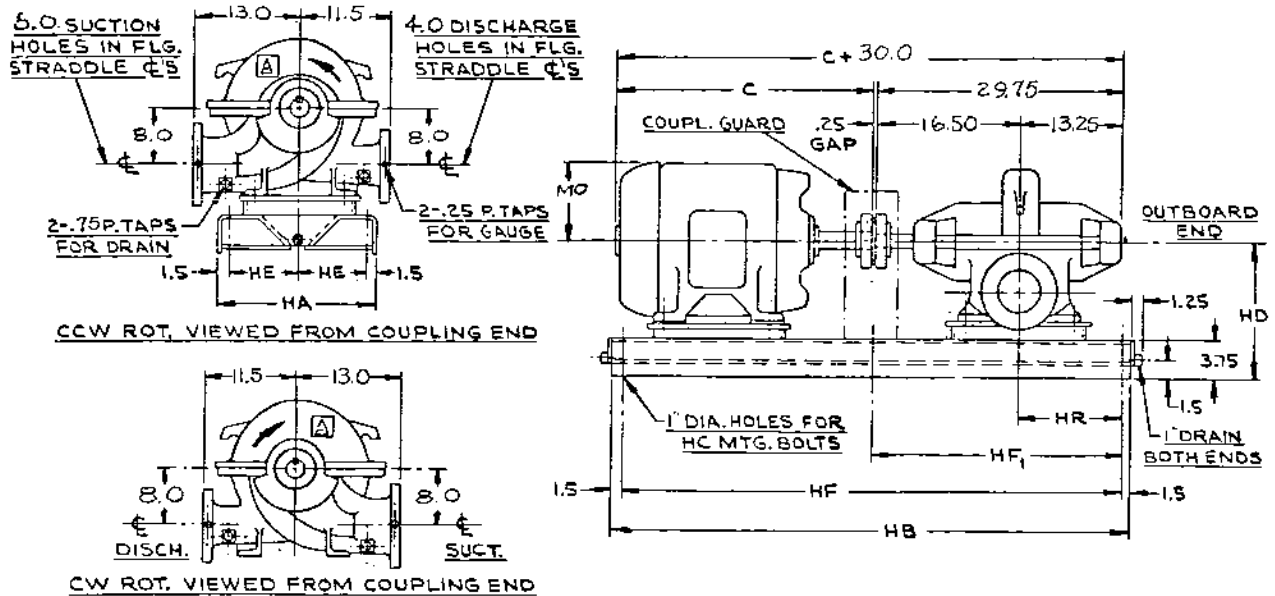


ALLIS-CHALMERS  
FIRE PUMP SYSTEMS  
DIMENSIONS  
MOTOR DRIVEN  
5 X 4 KSJF



FLANGED NOZZLES ①

New



NOTE: ALL DIMENSIONS IN INCHES

| MOTOR FRAMES | C    | HA   | HB   | HC | HD    | HE  | HF   | HF <sub>1</sub> | HR   | MO  |
|--------------|------|------|------|----|-------|-----|------|-----------------|------|-----|
| 256 T        | 23.1 | 17.0 | 54.0 | 4  | 15.25 | 7.0 | 51.0 | —               | 9.50 | 7.1 |
| 284 TS       | 23.1 | 17.0 | 54.0 | 4  | 15.25 | 7.0 | 51.0 | —               | 9.50 | 7.8 |
| 286 TS       | 24.8 | 17.0 | 54.0 | 4  | 15.25 | 7.0 | 51.0 | —               | 9.50 | 7.8 |
| 324 TS       | 26.2 | 17.0 | 54.0 | 4  | 15.25 | 7.0 | 51.0 | —               | 9.50 | 8.6 |
| 326 TS       | 27.8 | 17.0 | 54.0 | 4  | 15.25 | 7.0 | 51.0 | —               | 9.50 | 8.6 |
| 364 TS       | 28.8 | 17.0 | 60.0 | 4  | 15.25 | 7.0 | 57.0 | —               | 9.50 | 9.2 |

NOTES

- UNIT MUST BE LEVELED, SET AND ROUGH ALIGNED ACCORDING TO INSTRUCTIONS PRIOR TO GROUTING.
- BASE MUST BE COMPLETELY FILLED WITH AN APPROVED GROUT AND ALLOWED TO SET BEFORE PIPING.
- CUSTOMER TO SHIM UNDER MOTOR WHEN ALIGNING COUPLING. ALIGNING MUST BE DONE AFTER GROUTING BASE IN PLACE AND BEFORE CONNECTING PIPING. ALIGNMENT SHOULD BE RECHECKED AFTER UNIT IS ASSEMBLED AND PIPING INSTALLED.
- BOTH SUCTION AND DISCHARGE PIPES MUST BE SUPPORTED INDEPENDENTLY NEAR THE PUMP TO REDUCE STRAIN ON THE PUMP CASING. ALSO EXPANSION JOINTS, IF USED, MUST NOT EXERT FORCE ON CASING.
- HOLES IN SUCTION AND DISCHARGE FLANGES STRADDLE CENTERLINE.

- ① ALL DIMENSIONS ARE MAXIMUM FOR GIVEN ALLIS CHALMERS MOTOR FRAMES.
- ② ALL FLANGES ARE 125# FF ASA STANDARDS.

NOT FOR CONSTRUCTION,  
INSTALLATION OR APPLICATION  
PURPOSES UNLESS CERTIFIED.

FOR

APPROVAL



CUST. ORDER No

IDENT. No.

| PUMP DATA  | SIZE & TYPE | MODEL        | CURVE No | GPM   | HEAD  | ROTATION | FLANGES    |
|------------|-------------|--------------|----------|-------|-------|----------|------------|
|            | MOTOR DATA  | HP           | RPM      | VOLTS | PHASE | HERTZ    | FRAME SIZE |
| SHOP ORDER |             | CERTIFIED BY |          |       |       | DATE     |            |